

GroundPLUS \\ GroundBIRD

Liquid to water heat pumps \\ Hot water stations



Heating capacity S7/W35*: 30-1200 kW

Hot water temperature standard: upto +55°C
Hot water temperature HT: upto +65°C

Compressors: Scroll
Refrigerant: R410a
Condenser: BPHE
Evaporator: BPHE

Basic version: EEV, RS485 Modbus, etc.

Key available options:
Low noise \\ Touchscreen display \\ LON,
BACnet \\ Soft start \\ Heat recovery \\
Energymeter \\ COP control \\ Stainless steel
water piping \\ etc.

Heatpump versions

HPG: Ground source - nonreversible unit. Source liquid from -5C.
Heat water upto +55 - +65°C

HPR: Reversible on refrigerant side - the unit can work as a heat pump or as a chiller. The reversion in the refrigerant circuit. Liquid from the source side is separated from the user side water.

HPRW: Reversible on water side - the unit can work as a heat pump or as a chiller. The reversion in the water circuit. Liquid from the source side is mixed with the user side.

Tank & Pumps options

Tank - tank on the cold or hot water side.

Inverter or ON/OFF pumps - high or low pressure On/Off or inverter system pump.

Hydronic separator tank - hydronic separator tank on the cold or hot water side and heat exchanger very low pressure pump. High or low pressure On/Off or inverter system/user pump. Inverter system pump can be differential pressure regulated from 0 to
Customisation - 3 way valves \\ Second pumps \\ etc.

* - S7/W35 = Source side leaving water temperature 7°C, User side leaving water temperature 35°C

Heat pumps: Liquid to Water

GroundPLUS HPR

Heat recovery heat pump (source 20-40°C to water upto 78°C)



Heating capacity S40/W78*: 70-280 kW

Hot water temperature: upto +78°C

Compressors: Scroll
Refrigerant: R134a
Condenser: BPHE
Evaporator: BPHE

Already included: EEV, RS485 Modbus

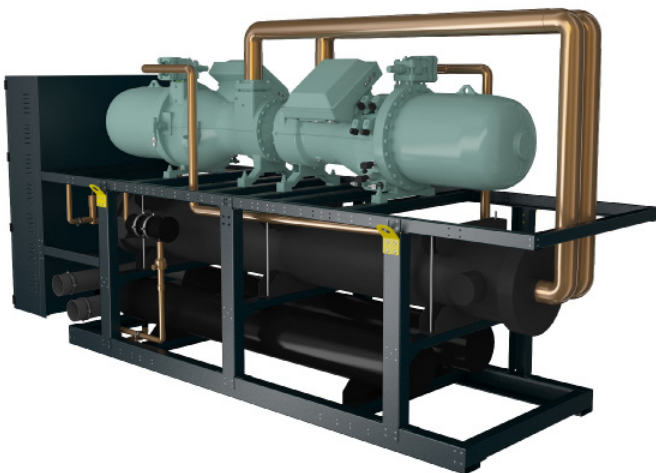
Key available options:

Low noise \\ Touchscreen display \\ LON,
BACnet \\ Soft start \\ Heat recovery \\
Energymeter \\ COP control \\ Stainless steel
water piping \\ etc.

* - S40/W78 = Source side leaving water temperature 40°C, User side leaving water temperature 78°C

BalticSCREW Ground

Watercooled screw heatpump



Heating capacity S7/W35: 190-2700 kW

Hot water temperature standard: upto +55°C

Hot water temperature HT: upto +65°C

Hot water temperature SHT: upto +78°C

Compressors: Screw (inverter on request)
Refrigerant: R134a, (R1234ze on request)
Condenser: DX Shell & Tube
Evaporator: Shell & Tube

Already included: EEV, RS485 Modbus

Key available options:

Low noise \\ Touchscreen display \\ LON,
BACnet \\ Soft start \\ Heat recovery \\
Energymeter \\ COP control \\ etc.